



## NEWS RELEASE

Contact: Randy Matheson | Executive Director, Community Relations | 425.204.2345 |  
randy.matheson@rentonschools.us



## **Honey Dew Elementary School gets a facelift**

### *Improvements are part of 2003 voter-approved bond measure*

October 14, 2008—Honey Dew Elementary School is currently undergoing modernization to upgrade all major building systems to meet the needs of a 21<sup>st</sup> century school and to be ready soon to use as an elementary school for neighborhood children.

The restoration of Honey Dew Elementary, located at 800 Union Ave NE, Renton, was part of a bond measure approved by voters in 2003. The construction project is on time and on budget. Many elements of the existing building will be reused in an effort to be environmentally friendly.

Major upgrades are being made to the structural, electrical, plumbing and mechanical systems to meet current codes and programmatic needs. The school will also have all its



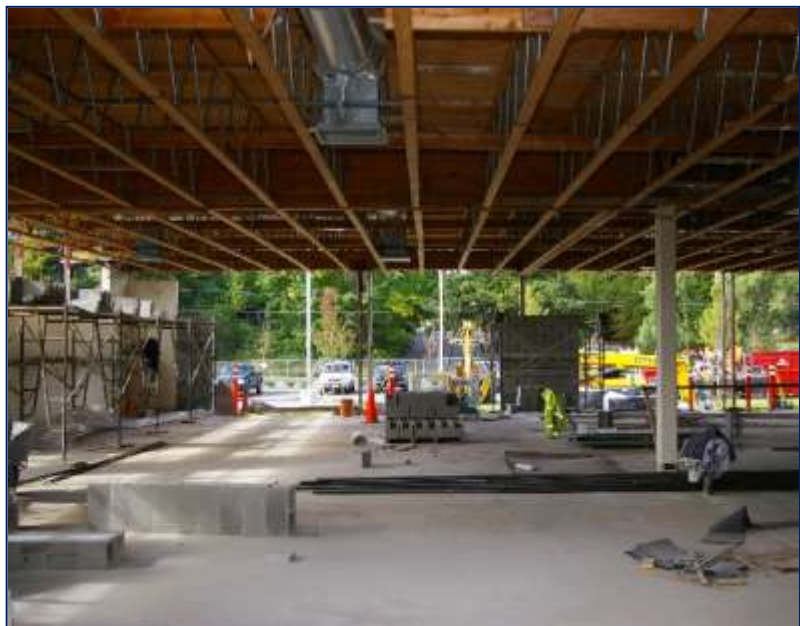
finishes updated with new windows, carpet, paint, wall coverings and ceilings. Classrooms will be fitted with new computer equipment, marker boards and ceiling mounted projectors.

The new school will feature 16 general classrooms and 3 kindergarten classrooms. Each classroom will have computer workstations that are networked through a server. Other building elements include a music room, library/media center and a gymnasium, which will also act as a cafeteria and student performance space.

The new entry pavilion will also be used as a student waiting area. The office and other administration areas will be centrally located to allow easy supervision. School bus and parent drop-off areas will be separated. The existing courtyard will become a functional and useable space that will serve the library as an outdoor reading area and provide visual relief for the classroom areas.

### **District to soon review boundaries for Honey School**

Renton Schools Superintendent Dr. Mary Alice Heuschel soon will reconvene the district's Boundary Review Committee to determine the boundaries for Honey Dew Elementary School. The expectation is to create a boundary that allows neighborhood students to walk to school. Currently, many of the students who live near the school attend neighboring schools.



Opening the school is determinate on several factors including current and projected future student enrollment figures and budgetary implications.